

Hinges

consisting of three parts, Steel / Stainless Steel

SPECIFICATION

Type

Type **C**: Fixing from the back side

Version in Steel

Hinge

Steel zinc plated, blue passivated **ST**

Pin

Brass, nickel plated

Washer

Brass, nickel plated

Hexagon nut ISO 4032

Steel zinc plated, blue passivated

Serrated washer DIN 6797 for securing screws

Steel zinc plated, blue passivated

Version in Stainless Steel

Hinge body, pin, washer

- Stainless Steel AISI 303 **NI**

- Stainless Steel AISI 316L **A4**

Hexagon nut ISO 4032

Stainless Steel AISI 304

Serrated washer DIN 6797 for securing screws

Stainless Steel AISI 304

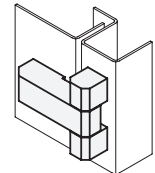
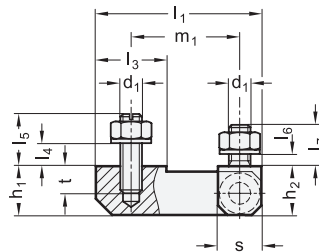
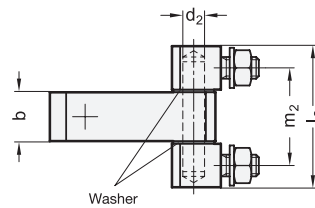
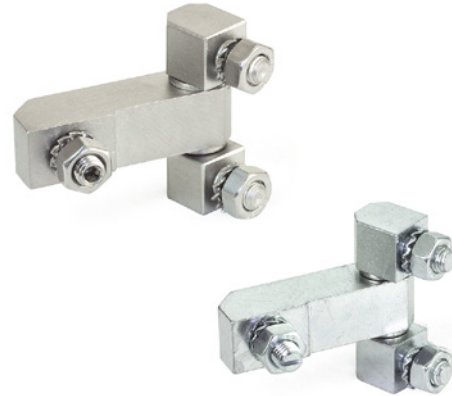
INFORMATION

Hinges GN 129.2 are used for doors which are flush with the frame on the outside. Once assembled, they cannot be unhinged.

With the fixing from the inside, they are especially suitable for doors and trap doors which must not be detachable from the outside as an anti-tamper device.

TECHNICAL INFORMATION

- Stainless Steel characteristics (see page A26)
- List of hinges types (see page 1362)



GN 129.2

Description	l1	l2	b	d1	d2	h1	h2	l3	l4 max.	l5	l6 max.	l7	m1	m2	s	t	
GN 129.2-45-40-C-ST	45	40	13	M 6	6	13	13.5	18	6	11	5	10	30	28.2	12	9	97
GN 129.2-50-51-C-ST	50	51	18	M 8	8	18	18	26	8	14	8	14	29	35	16	11	213
GN 129.2-53-40-C-ST	53	40	13	M 6	6	13	13.5	26	6	11	5	10	38	28.2	12	9	108
GN 129.2-61-51-C-ST	61	51	18	M 8	8	18	18	26	8	14	8	14	40	35	16	11	240

GN 129.2-A4

STAINLESS STEEL

Description	l1	l2	b	d1	d2	h1	h2	l3	l4 max.	l5	l6 max.	l7	m1	m2	s	t	
GN 129.2-45-40-C-A4	45	40	13	M 6	6	13	13.5	18	6	11	5	10	30	28.2	12	9	100
GN 129.2-50-51-C-A4	50	51	18	M 8	8	18	18	26	8	14	8	14	29	35	16	11	214

GN 129.2-NI

STAINLESS STEEL

Description	l1	l2	b	d1	d2	h1	h2	l3	l4 max.	l5	l6 max.	l7	m1	m2	s	t	
GN 129.2-45-40-C-NI	45	40	13	M 6	6	13	13.5	18	6	11	5	10	30	28.2	12	9	97
GN 129.2-50-51-C-NI	50	51	18	M 8	8	18	18	26	8	14	8	14	29	35	16	11	213

